

Quick Start Guide

IP Camera Web Server

V1.0

1. Connect the Power and Network

When the IP camera is installed, please use DC 12V power supply and make sure the network is connected.

2. Login

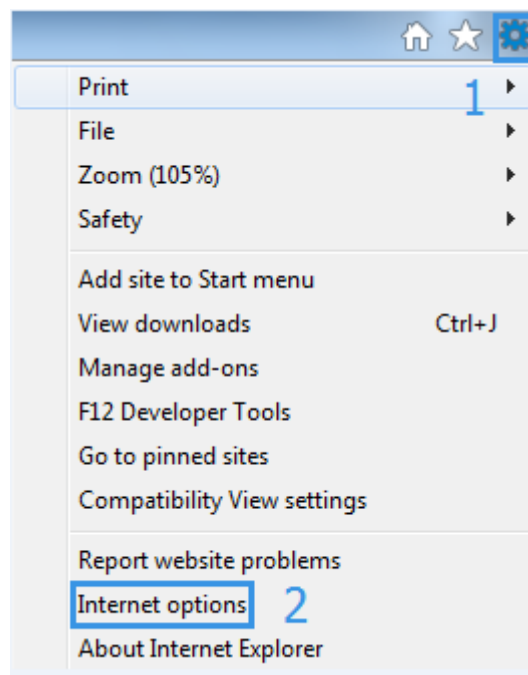
1. Please enter IP address in browser

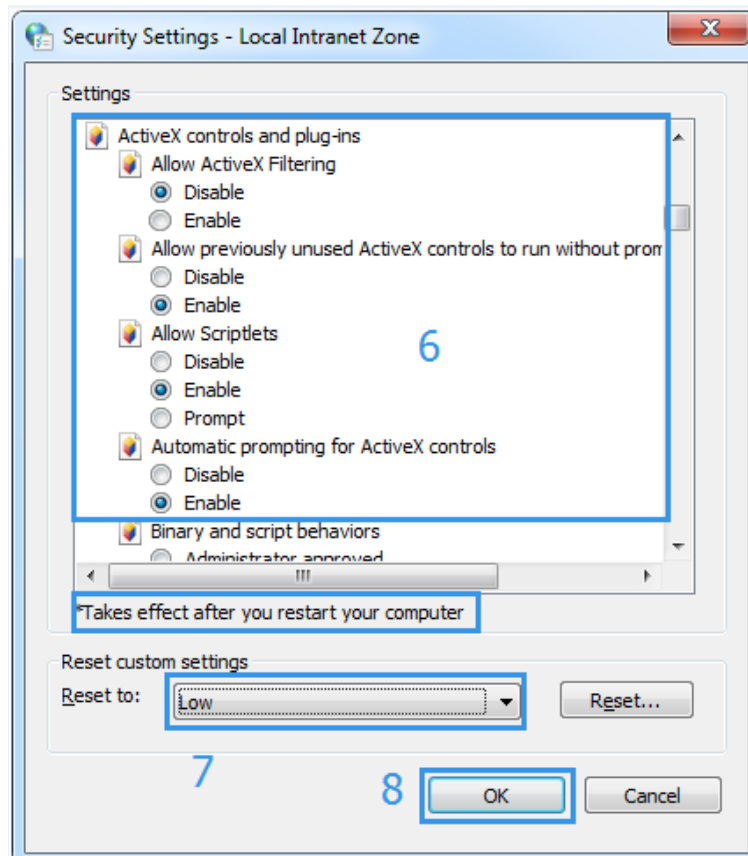
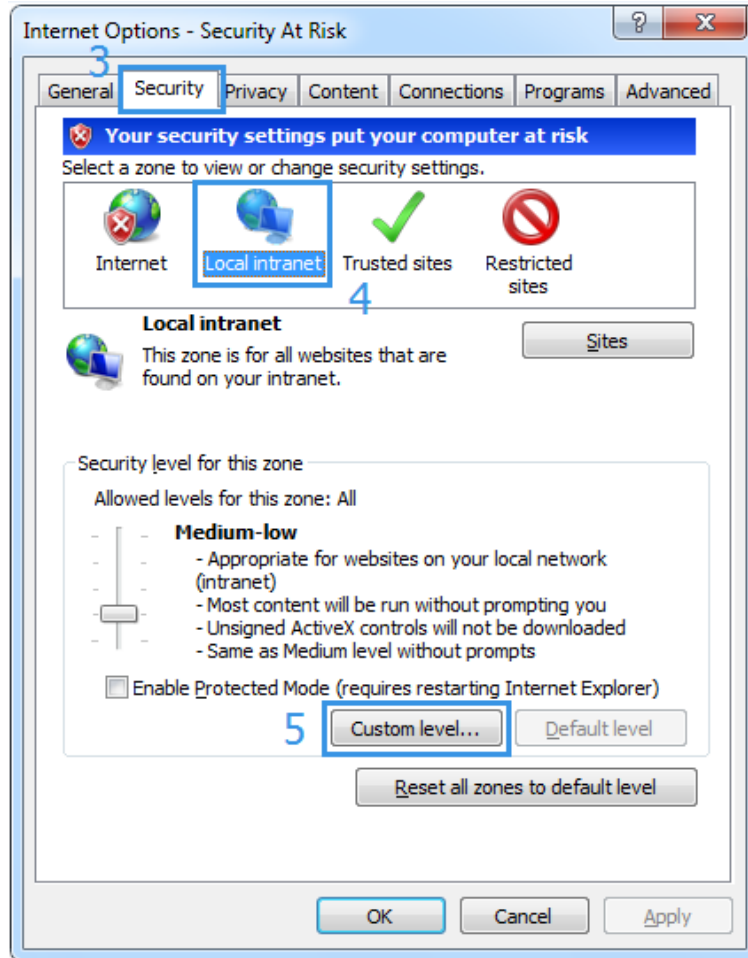
The default IP is **192.168.1.10**.

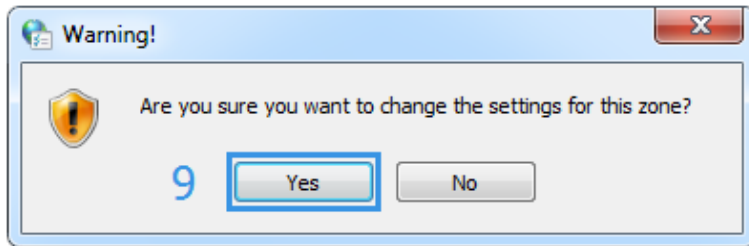
If the IP address is in wrong section, please use search tool (**General_DeviceManage**) from CD to change it.

2. How to set Internet Security Option

After Internet security option is set, we can add ActiveX controls, as shown below.



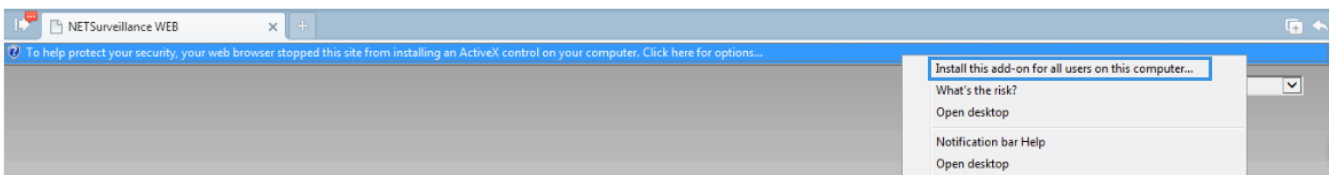




After all steps are done, reboot the computer to make it work.

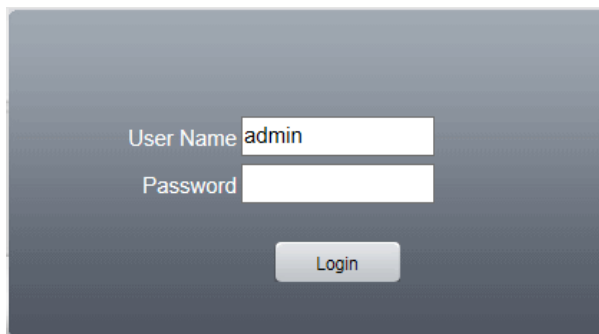
3. Add an ActiveX control

If this is the first connection, an ActiveX control option will appear under the browser, click it, and select **[Install this add-on for all users on this computer...]**.



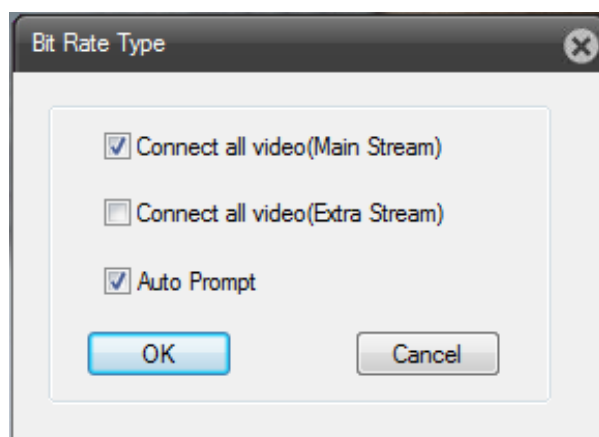
4. Enter username and password

User name is "admin" as default, there is no password yet.



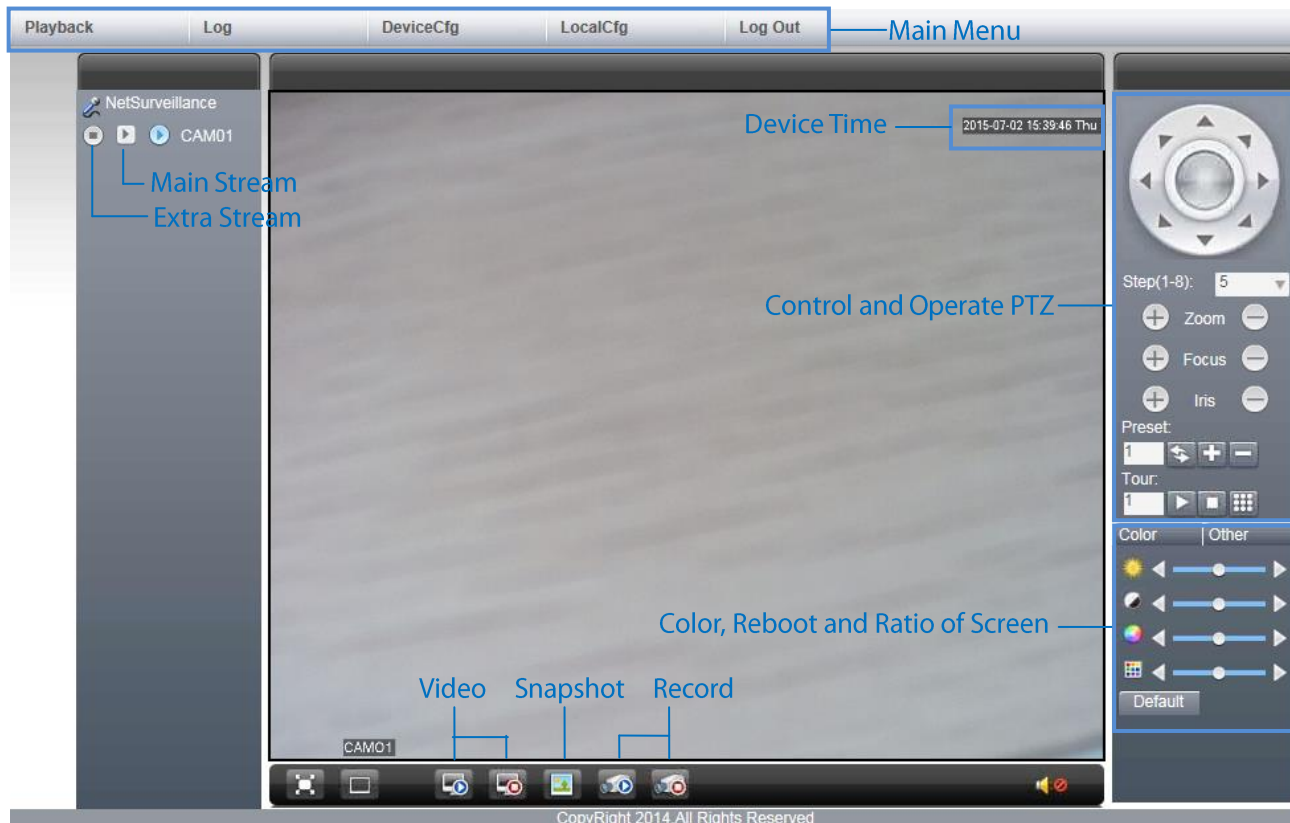
5. Select stream

Main stream has better resolution and clarity than extra stream. Normally, main stream is recommended.



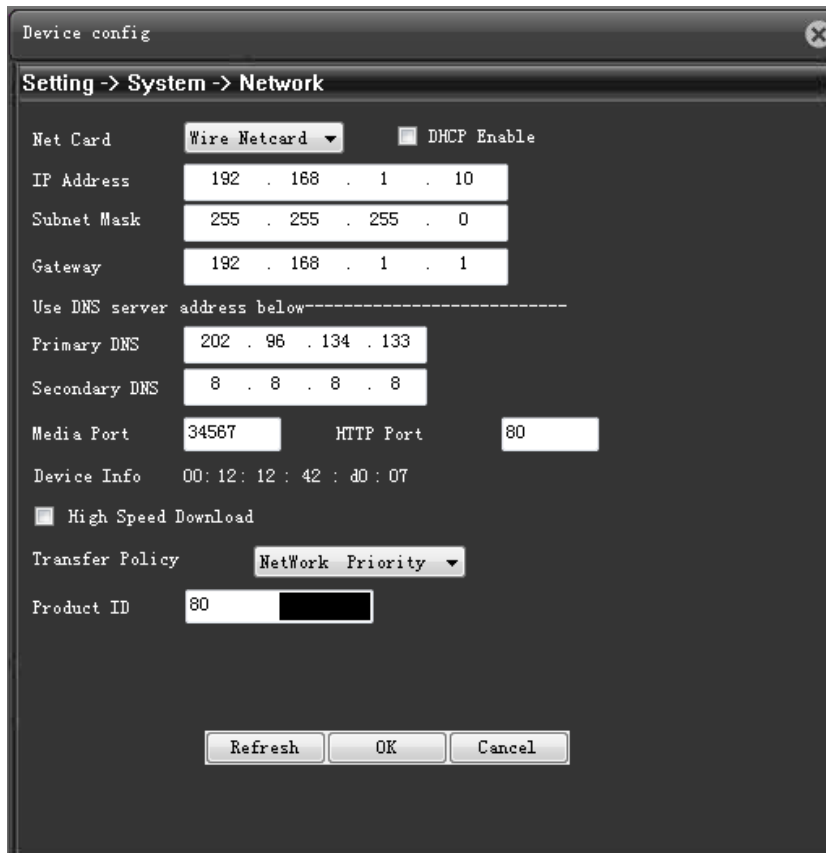
3. Main Interface

At NET Surveillance WEB interface, you can watch playback, check log, and set parameters, as shown below.



4. Network Setting

Click [DeviceCfg] > [Setting] > [Network], network setting interface will be shown as below.



The screenshot shows a 'Device config' window with a 'Setting -> System -> Network' sub-window. The interface includes the following fields and controls:

- Net Card:** Wire Netcard (dropdown menu), DHCP Enable
- IP Address:** 192 . 168 . 1 . 10
- Subnet Mask:** 255 . 255 . 255 . 0
- Gateway:** 192 . 168 . 1 . 1
- Use DNS server address below-----**
- Primary DNS:** 202 . 96 . 134 . 133
- Secondary DNS:** 8 . 8 . 8 . 8
- Media Port:** 34567
- HTTP Port:** 80
- Device Info:** 00:12:12:42:d0:07
- High Speed Download
- Transfer Policy:** NetWork Priority (dropdown menu)
- Product ID:** 80

At the bottom, there are three buttons: Refresh, OK, and Cancel.

These data are equipment's defaults, please change them depend on your actual networks.

Net Cards: Wire Netcard

IP Address: 192.168.1.10

Subnet Mask: 255.255.255.0

Gateway: 192.168.1.1

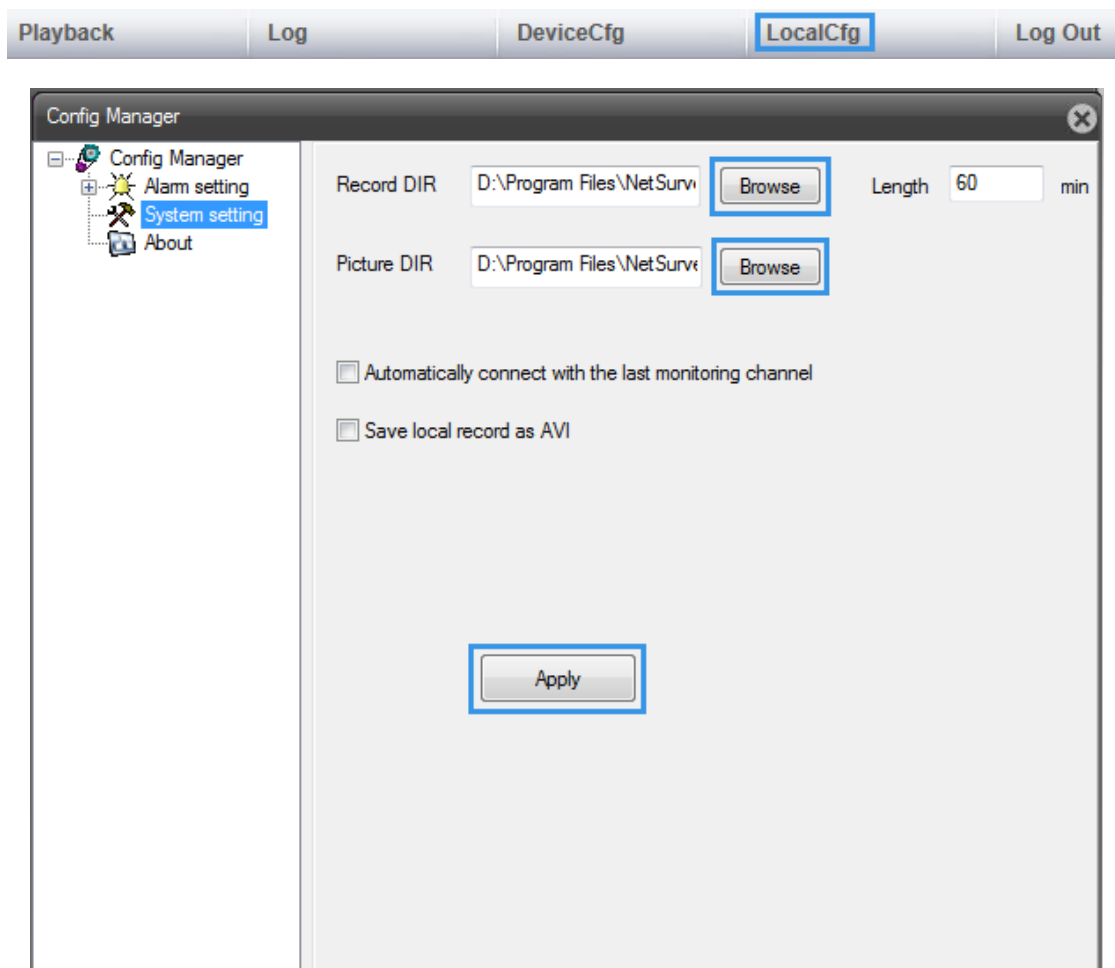
Media Port: 34567

HTTP Port: 80

Transfer Policy: Able to select adaptive, quality preferred, fluency preferred and network priority. Network priority will change stream automatically which based on your network setting. Adaptive will do a compromise between quality and fluency, sacrifice a bit quality but bring more fluency at same time. Fluency preferred and adaptive can only be activated under the extra stream circumstances, other than that, quality preferred mode will be activated and adjust itself which depends on network circumstances.

5. Set the Direction of Records/Pictures

Click [LocalCfg] > [Config Manager] > [System Setting], click [Browse] to change the saving path of Picture/Record.

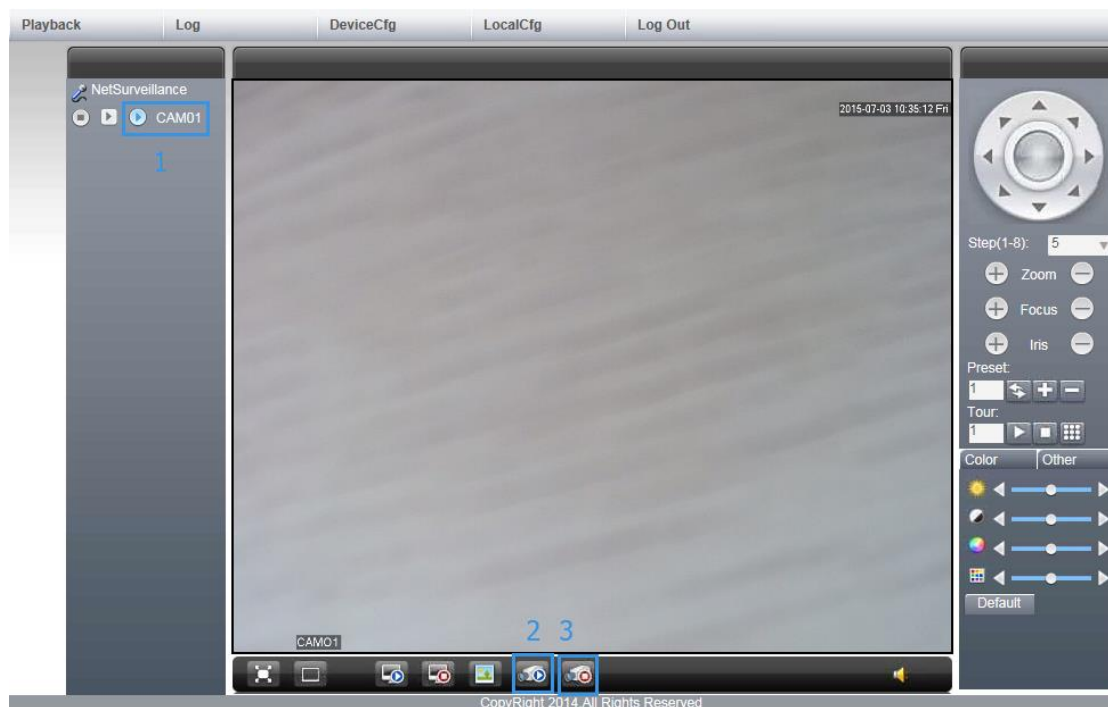


NOTE: Picture's default format is *.bmp; Video record's default format is *.h264, if you want to activate *.avi, please check [Save local record as AVI].

6. Record/Snapshot Manually

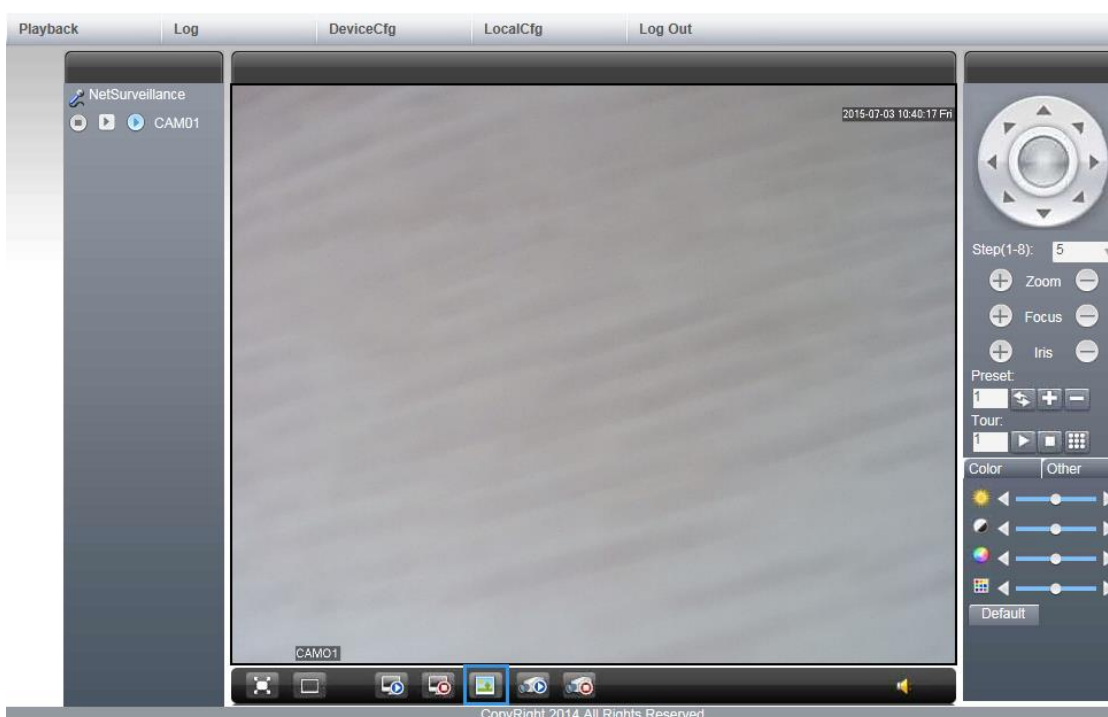
Record steps:

1. Click **[Main Stream]**, as step 1.
2. Click **[All Channel Record]** to start recording.
3. Click **[Close All Record]** to stop recording.



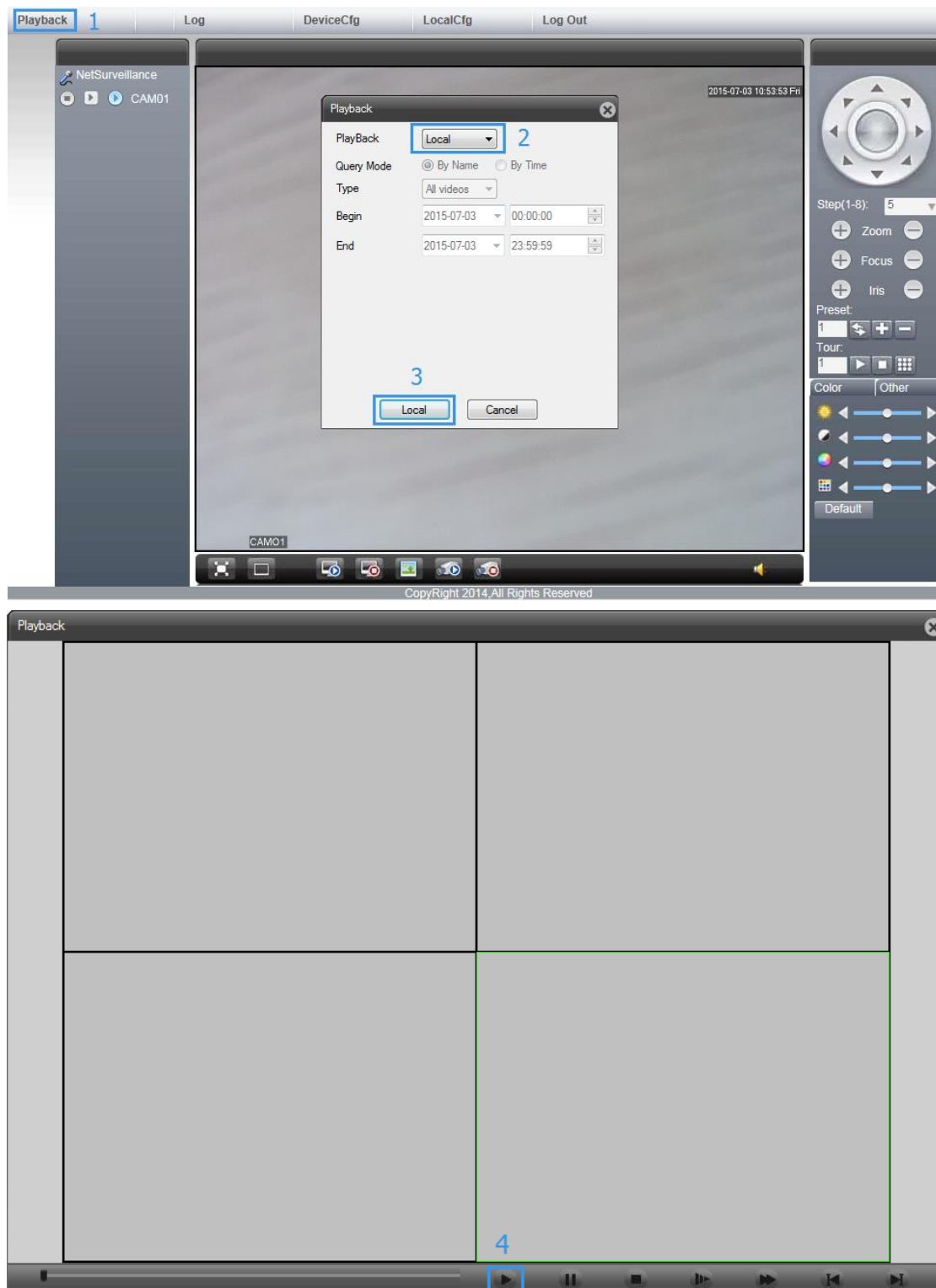
Snapshot

Click **[Snapshot]** as below to snapshot, when snapshot is finish, you will find the picture on the disk which you set.



7. Local Playback

1. Click **[Playback]** at the upper left side of the monitor page to enter the video playback page.
2. Select **[Local]** in [playback] drop-down box.
3. Click **[Local]**.
4. Click **[Play]** to open record files.



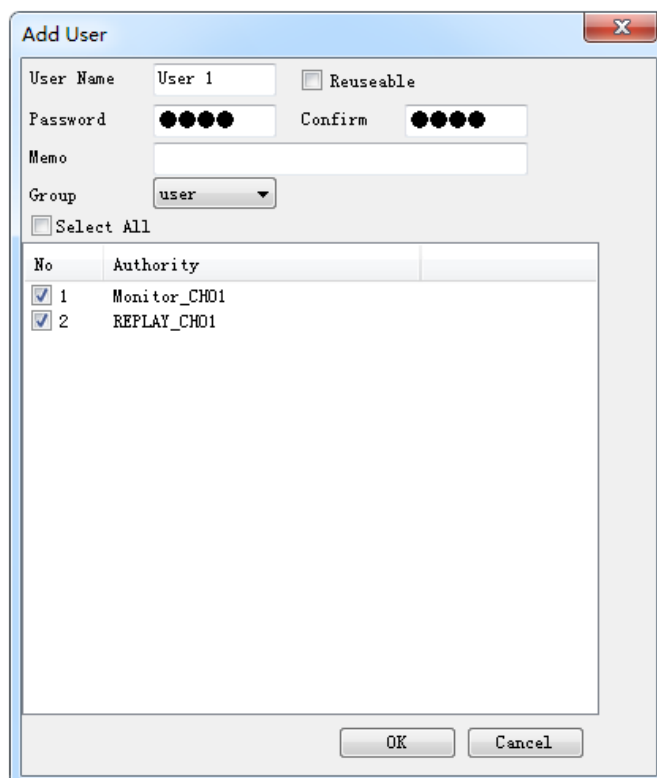
5. Add Users/Groups

Administer should set user permissions, customize user will make daily maintains be easier, this is how to set it.

1. Click **[Setting]** > **[Advanced]** > **[Account]**, shown as below.

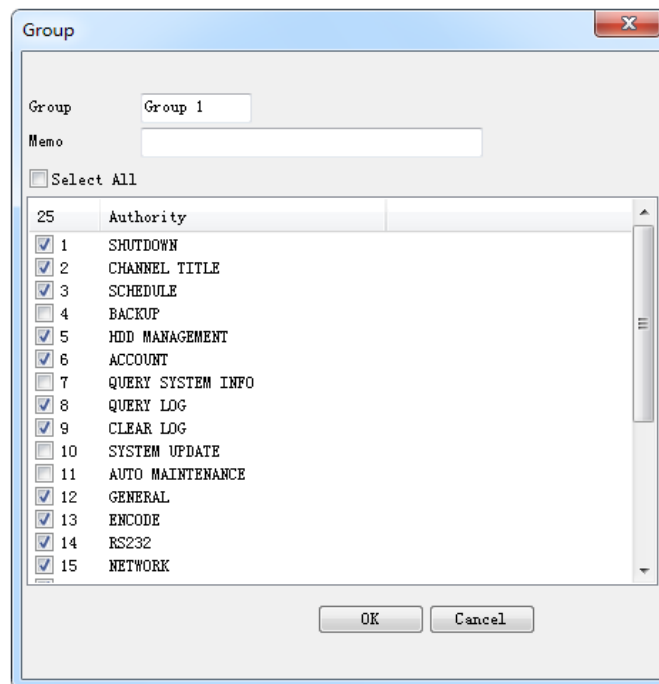


2. **Add User:** Click **[Add User]**, add user name and password. Select a group, admin group and user group are system default group. Select operation privileges, normal user only able to use "Monitor_CH01" and "Replay_CH01", as shown below.



NOTE: For management convenience, suggest give administer higher privileges than normal user.

3. **Add group:** Single or multiply group can be added, operation privileges can be selected too.

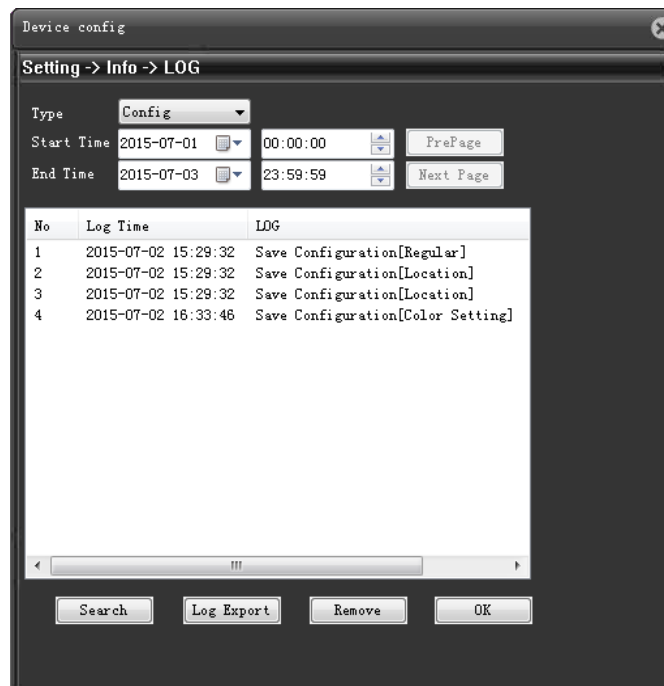


6. Search Logs

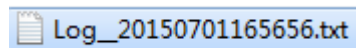
1. Click **[Setting]** > **[Info]** > **[Log]**, enter the log searching interface.



2. Select log type, you can choose the time period, click[**Search**] to check the operation log.



3. Click [**Log Export**] to export *.txt file.



7. Adjust the Lens Manually

1. Connect camera to monitor to get image.
2. Use Zoom screw to locate a suitable version.
3. Use Focus screw to adjust the quality of image.

NOTE: Zoom and Focus screw are at the bottom of IP camera.